

# SIEMENS

*Ingenuity for life*

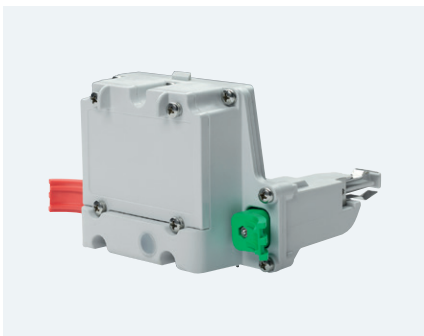
## Fusesaver™

with sectionalizing functionality

[siemens.com/fusesaver](https://www.siemens.com/fusesaver)

### Isolating faulted network sections effectively

Fusesaver™ with sectionalizing functionality is designed for all sites on a MV overhead distribution network up to 27 KV and 6.3 kA. Working in conjunction with an upstream recloser or circuit breaker, the Fusesaver™ automatically isolates the faulted network section when a permanent fault occurs. The self-contained unit opens after detecting a pre-determined number of fault clearing attempts from the upstream protection device. By operating only under permanent fault conditions, it prevents unnecessary outages. In the event of a temporary fault, upstream protection devices clear the fault. Fusesaver™ is a simple yet effective way to improve network reliability while providing a high degree of customisable options.



### Key Features

- Fully insulated system
- Fault rated up to 6.3 kA
- Opening time <100 ms
- Event log and load profile
- Inrush restraint and cold load pickup modifiers
- Single and multi-phase operations
  - Three-phase lockout for single-phase faults (avoiding ferro-resonance risks)
  - Wireless ganged with built in delay
- Resettable while in service (via wireless link)
- Fully configurable when deployed (via wireless link)
  - Fault reset time
  - Current detection levels
  - Counts to open (up to four)
- High-intensity LED fault indicator
- Rechargeable battery back-up

- Can be used as network switching point
- User-friendly operation
- Multiple mounting options

### Benefits:

- High level of service continuity
- Improved operator safety
- Environmentally friendly (SF6 gas free)
- Fast and easy installation
- Simple integration into network
- Easy coordination with existing reclosers
- Low capital cost (fast ROI)

Traditional solutions often don't drop out and isolate when required. Fusesaver™ has reliable vacuum interrupter with magnetic actuator drive in sealed environment to eliminate the risk of corrosion induced failures to operate.

Contact us via [fusesaver.au@siemens.com](mailto:fusesaver.au@siemens.com) to receive more information

# Fusesaver™ Ratings

Conform with the relevant sections of IEC 62271-100

Rating Description	Unit	Low Range Model	Standard Range Model	High Range Model
Rated current	A	40	100	200
Rated maximum voltage	kV		27	
Rated BIL	kV		125	
Rated power-frequency withstand voltage $U_d$ (60 s)	kV		60	
Pick-up current	A	5 to 200 in 1 A increments		
Number of opening counts		1–4		
Dead line detection level	A	<0.1	<0.5	<0.5
Dead line verification time	msec	<80		
Total opening time	msec	<100		
Count reset timer	s	1 to 300 in 1 s increments		
Minimum line current to self-power	A	0.15	0.5	1.0
Battery back-up power		YES <sup>(a)</sup>		
Short time current	kA	1.5	4	6.3
Short time current duration <sup>1</sup> (Thermal overload protection)	s	0.2	0.2	0.5
Peak current	kA	3.75	10.4	16.4
Load / fault break current	kA	1.5	4	6.3

Service Environment	Rating
Operating temperature range	–40 <sup>(b)</sup> to +50°C
Humidity	0 to 100%
Maximum altitude	4,000m <sup>(c)</sup>
Pollution class	Very Heavy

- (a) Routine battery replacements every eight years.
- (b) Reclose intervals must be extended at temperatures below –35°C.
- (c) De-rating required above 1,000m.

